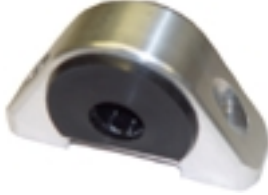


H22/23 Installation into 92-95 Civic & 94 up Integra

Thank you for purchasing the Hasport EGH1 bolt in mount kit. This instruction sheet covers the installation of the H22, H23 or F22 engines into the 92-95 Civic and 94 up Integra. This only deals with the installation of the engine, there are several other considerations also when installing this engine such as shift linkage and wiring. That information is not in this document.

Right Hand



Rear Bracket



Right Hand Bracket



Rear Mount



Left Mount



Mount Hardware

Quant.	Description
2	10 mm X 1.25 X 35 Socket Head
1	12 mm X 1.25 X 35 Bolt
1	2" Flat Washer

Hardware

Quant.	Description
2	10 mm X 1.25 X 35 Bolt
1	10 mm X 1.25 X 35 Socket Head
2	10 mm Washer

Hardware

Quant.	Description
2	10 mm Washer
2	10 mm X 1.25 X 55 Bolt

Hardware

Quant.	Description
2	10 mm X 1.50 X 30 Socket Head

Hardware

Use your stock hardware.

Engine bay preparation: The right hand (passenger side) frame rail bracket needs to be removed, due to the fact that it interferes with the shift cables from the H22 transmission. Once the spot welds are removed the bracket can be knocked off with a hammer. Caution, drill only deep enough to penetrate the bracket, not the frame rail. Another way to remove the bracket would be to use a die grinder.



Then using the stock nut on the third stud and the two supplied bolts install the bracket on the transmission as shown in figure. If you are installing the engine from the top down you will need to wait to do this last step after the engine is in the car.



Using the hardware provided, bolt the rear bracket in place of the stock rear mount as in figure 5. The new rear mount will then be mounted on top of this bracket. The allen bolt is used in the front hole.



Installing the engine the rear bracket for the H22 needs to come from a 92 up Prelude (part number 50827-SS0-010). Whether you install the engine from the top or the bottom, install the rear bracket as the motor is being moved into place. Insert only the top bolt and rear mount bolt on the rear bracket at this time. Install the left-hand mount at this time. Lower the transmission side slightly below the frame rail and install the transmission bracket at this time if you haven't already. Now slide the right mount onto the transmission bracket and raise transmission into place.

Hasport Products that may be helpful with your installation:
 EGHAXCMP – Compete axles. No need to build your own.
 EGHRB – Rear Bracket.